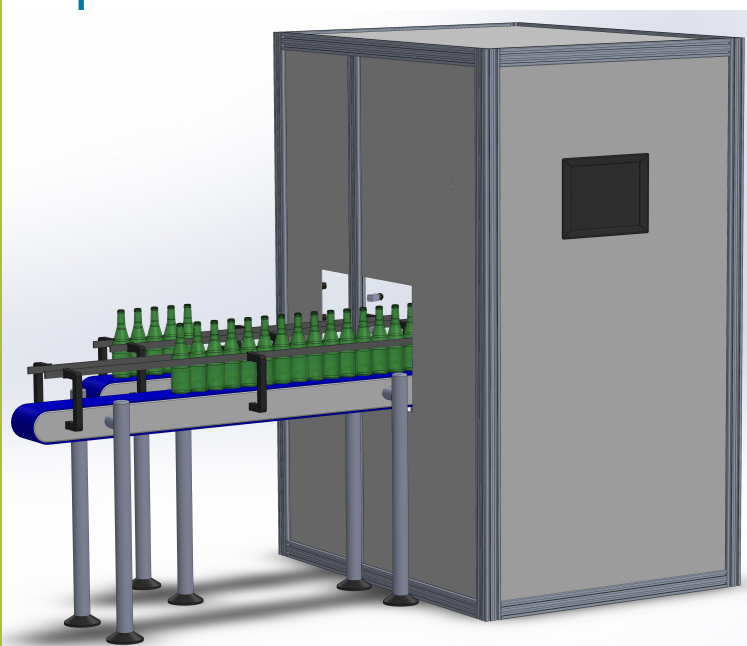


A

AceMACC 2.0 is the new version of the AceMACC, the Automatic Machine for Capacity Control for glass containers of all shapes by AceLabs. The machine is designed for hollow glass manufacturing companies that need to control the capacity on samples of various types of containers, with the aim of having a control on production.

Thanks to the technological development and the great experience over the years on the capacity control machines, AceLabs has studied a new version with features that have been greatly improved compared to the previous version.



Functions

- Capacity control
- Report test generation

Advantages

- 3D vision system with high resolution cameras for container position recognition
- Possibility of connection to factory management software
- Intuitive operations with a touch and simple interface
- Reports generated according to industry regulations
- Production under control and satisfied end customers
- Cartesian filling robot with even higher transaction speed thanks to linear motors
- Low-cost life cycle

Available options

AceMACC 2.0 can be equipped with an input conveyor belt of variable size based on the number of molds of the plant, an output belt for maintaining the sequence, a rotating table or a direct reject. The structure of the machine is fully modular and customizable.

Optimized cycle times

Contentitore	Tempo MACC 1.0 (solo livello)	Tempo AceMACC 2.0 (solo livello)
Birra 330ml	min 80s max 95s	~ 60s
Vino 750ml	min 95s max 110s	~ 70s
Vino 1500ml	min 135s max 150s	~ 100s

General specifications

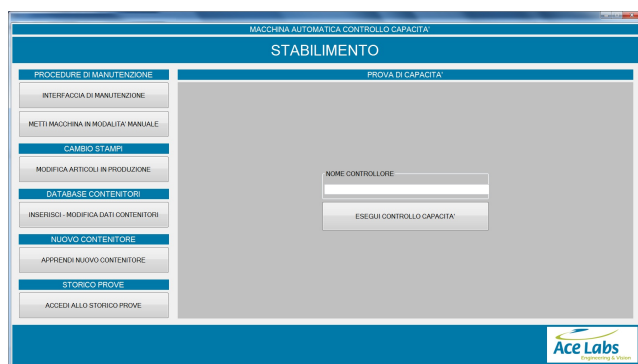
- Container capacity: minimum 80ml / maximum 3000ml
- Container height: minimum 50mm / maximum 400mm
- Container diameter: minimum 40mm / maximum 180mm
- Maximum container weight (at the end of the test) 5000g
- Maximum number of samples: 36
- Maximum level height 130mm
- Electric box translation axes
- High speed Cartesian filling robot with linear motors
- Four 3D vision cameras for high resolution centering
- Doubled filling water flow
- Support for filling straw with retraction and emergency stop sensor
- Graduated filling straw with zero mark
- Centering for each type of glass and improved container
- Proportional valve for filling control
- Flow sensor
- Water supply pressure sensor
- Water temperature sensor with extended range
- Software correction of the mouth satin distinguished by article
- Optical level sensor
- Laser container mouth sensor
- Optional output line: Conveyor belt / Table



Versatile and customizable interface

Intuitive design interface, easy to use and fully customizable. Designed to make operations easier in a cycle time and make the inspection even more efficient.

Initial HMI interface with configurable menus according to customer needs. Possibility to view the tests performed, add or remove molds, and manage the maintenance of the machine.



The extracted data are saved and recorded in PDF reports, the software can also be connected to the plant management programs. All in a few clicks.

