



ALPHA XS

Air Cooling Recycling Extruder

The **ALPHA XS** recycling extruder uses Plasmac's unique Short Screw Technology (S.S.T.), which is based around a dual diameter 10:1 L/D ratio screw.

PRINCIPLE OF OPERATION

The waste material is directly fed into the screw meaning no prior size reduction is required. Due to this, little or no dust is produced which means a higher quality pellet with the lowest levels of gels possible. The S.S.T. ensures low shear and runs at low melt temperatures guaranteeing an absolute minimum of material degradation producing the highest quality recycled pellet.



MAIN FEATURES

Minimal power consumption & the highest output / kW of installed power in the market

Giving you lower running cost and therefore the quickest return your on investment with paybacks in as little as six months.

Low shear, minimum process dwell time and the absolute minimum of material degradation

Means you can recycle all of your scrap material into high quality pellets, reducing your material costs and improving your profitability

Direct extrusion design, no prior size reduction required

Requires no other costly equipment, reduces maintenance and increases your productivity, therefore improving your profitability.

Smallest footprint recycling machine available on the market

Minimal floor space is required freeing up valuable floor space for other applications

Air Cooled Pelletiser

TRIM BASKET

For feeding inline trims into the recycling extruder

REELFEED

Used to feed off-specification reels or scrap reels into the extruder, can be used simultaneously with the trim basket.

SUPATRIM - TRIM PULLING NIP

Used to convey tacky or extensible trims into the extruder.

SCREEN CHANGER

Manual Screen Changer, used when running offline products such as reels, flake etc.

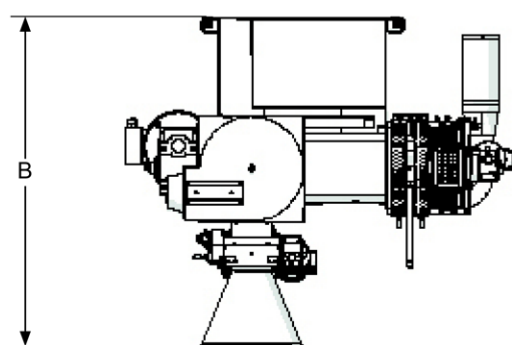
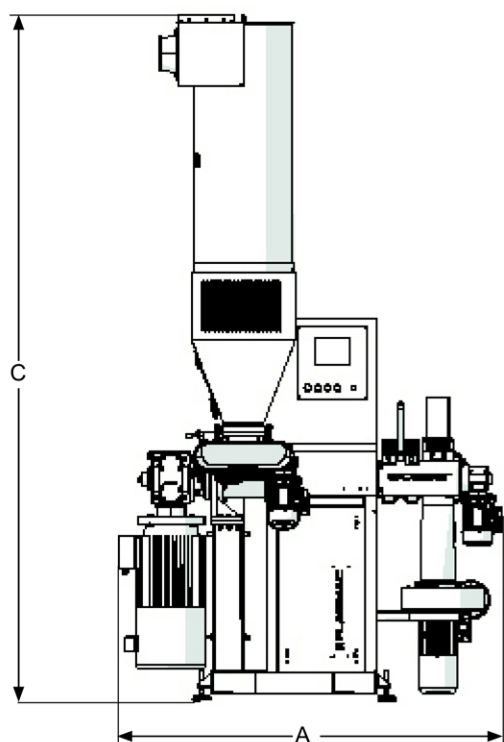
DTEC

A fibre optic pellet detection system to advise the operator if there are issues in the pelletiser

ANTISTATIC BAR

A bar on the top of the Trim Basket to remove static from trims.

TECHNICAL DATA



MODEL	Max Output * (Kg/h)	Motor (kW)	Floor Space (m ²)	A (mm)	B (mm)	C (mm)	Weight ** (Kg)
AXS	45	11	2.60	1750	1480	3250	750
* Depends on the type and the format of the material							
** Depends on the installed accessories							