



# SYNTROL

## Supervision and Control System for Extrusion Lines

**SYNTROL** is SYNCRO's turnkey supervisory and control system, designed for both new extrusion lines but also for easy and quicky retrofitting your existing extrusion line replacing your old control system.

### PRINCIPLE OF OPERATION

Syntrol system comprises:

SYNTROL INFINITY, a modern and user-friendly touch HMI designed to provide the operator with fast and complete control of the extrusion line. Furthermore, extensive and in-depth data storage for production analysis allows you to keep your business always under control.

SYNTROL PLUS, a state-of-the-art industrial PLC technology created to manage drivers and power of both Blown and Cast coextrusion lines. Our versatile and adaptable system will allow you to upgrade your production and control with minimal effort.



### MAIN FEATURES

#### ALL-IN-ONE SOLUTION

Syntrol is designed to manage and support all Syncro machines, giving you complete control over the entire extrusion process. This includes, but is not limited to:

- Material Conveying
- Dosing systems with batch or blend control
- Zones temperature control, both in heating and in cooling
- Extruders driver speed and pressure control
- Reversing rotation control
- Haul Off drive speed and position control
- Layflat and cages control
- Gusset and Collapsing Frames control
- Scanner and automatic profile control
- Bubble break sensors, corona treatment and other auxiliary equipment

#### INTUITIVE INTERFACE

The interface has been professionally designed following the latest trends in information organization and user interfaces. It provides you with pages that are informative, responsive, easy to use and captivating.

#### MODERN FUNCTIONALITIES

Syntrol features function designed to optimize startup, production and maintenance, elevating your line from good to excellent.

#### DATA COLLECTION

The Syntrol Infinity database system enables safe storage and recall of dosing recipes, orders, production data, alarms and events. Our trends and production reports allow you to analyze and document in depth the state of your production, both current and past. Syntrol Infinity helps you plan, improve and reduce waste.

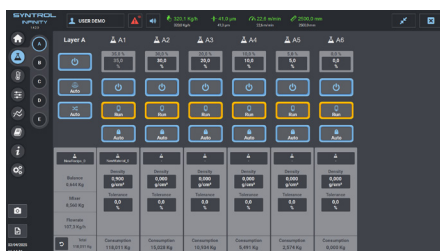
#### ADAPTABLE SYSTEM

Our PLC system is modular and compact, allowing easy adaptation to existing electrical cabinets and different hardware configurations. This makes your technicians' work easier and enables fast and effortless transition to a modern and efficient way to control. Our system is 100% turnkey and designed to adapt to existing connections, with fully configurable IOs and analogic signals (0-10V, 4-20mA, 0-20mA).

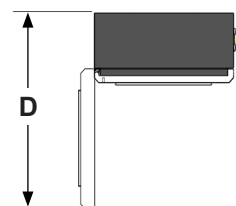
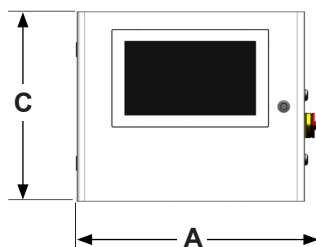
#### INDUSTRY 5.0 & IoT

All Syncro machines are ready to be integrated with third party supervisory controls and ERP systems using the latest generation of OPC-UA protocols as standard.

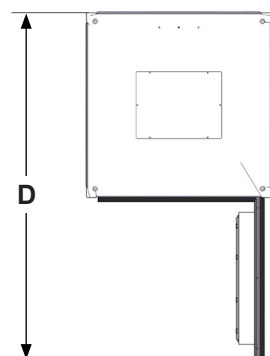
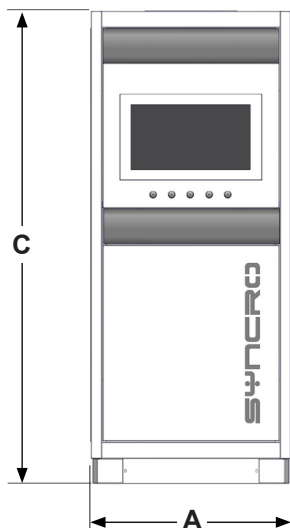
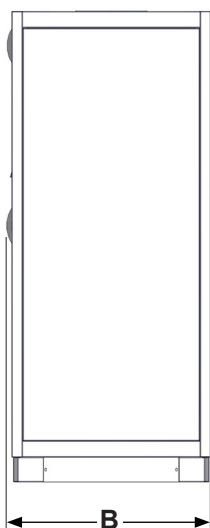
## TECHNICAL DATA



### Syntrol Box



### Syntrol Cabinet



Model	A (mm)	B (mm)	C (mm)	d (mm)	PC
Syntrol Box	635	310	500	840	10" - 15"
Syntrol Cabinet 600	600	800	1900	1200	15"
Syntrol Cabinet 800	800	800	1900	1500	15" - 21"
Syntrol Cabinet 1000	1000	800	1900	1600	15" - 21"