

Gravimetric Feeding Solutions For All Molding And Extrusion Applications



2 load cells ensure dosing accuracy within $\pm 0.2\%$ of your target let-down ratio.

High Resolution

Only material and hopper weighed, not the complete feeder.

PRIME Calibration (Patented solution)

Allows you to fast-track the calibration process while priming the barrel with material. The feeder is already calibrated prior to the start of production.

Dual Load Cells

The MGF Feeder material hopper is mounted on 2 load cells which measure the weight of the hopper and material, constantly updating the loss in weight as material is dosed.

Accuracy $\pm 0.2\%$

Automatic re-calibration during production guarantees that feed rate is held to within $\pm 0.2\%$ of desired let-down ratio.

Modular Design

Easy disassembled for cleaning and reassembled for next job. No tools required.

Fast Material Change-Over And Clean Out

Light weight hopper is easy removable which allows unused material to be removed and rapid cleaning prior to next job start-up.

Interchangeable Dosing Screws

Choice of dosing screws that combined with the software control provide industry leading accuracy compared to any other type of dosing device available in the market. Injection and blow molding and extrusion application focus.

Touchscreen Control Option

User-friendly controller features a 7" full color and fast response touchscreen.

Stepper Software Control

Stepper motor that advances at 200 increments per revolution. Combined with the software this allows accuracy of $\pm 0.2\%$.

100% Color Inject (Patent Pending)

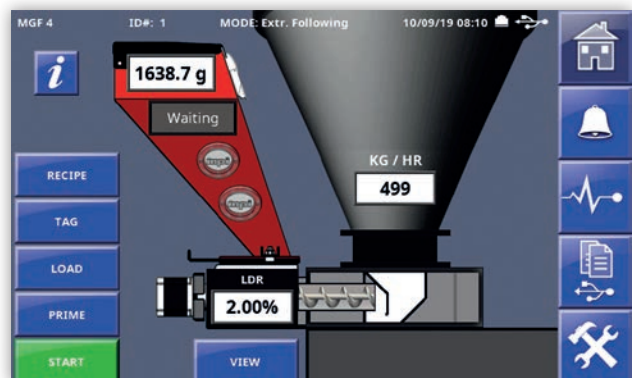
New control mode for injection molding that provides coloring of the entire shot, during both injection and recovery cycles (not just recovery). This mode is ideal for critical colors & additives as well as tinting.

High Heat Applications

High temperature option for working in high heat applications like PET, designed to isolate heat transfer to masterbatch or additives.

Compatibility

The throat adaptor fits readily on most processing machine throats and easily supports nearly any main material supply hopper.



Machine Integration: MGF Configuration – ST vs. STV

Our MGF-ST configurations can be used for either injection or extrusion applications. Our MGF-STV is the alternative option, where the input circuitry is voltage sensing and suited to Injection molding only.

Complete Extrusion Control Options

Variety of options available to suit your extrusion processing needs.

Technical Data

Extrusion Applications

	EXTRUSION lb/hr* kg/hr*					
	MGF-3-ST		MGF-4-ST		MGF-8-ST	
Auger Diameter	3/8"	9.5 mm	1/2"	12.7 mm	1"	25.4 mm
Minimum Rate	0.4	0.18	0.6	0.3	4	1.8
Maximum Rate	8	3.6	40	18	120	55

*Based on material density of 55 lb/ft³ (881 kg/m³)

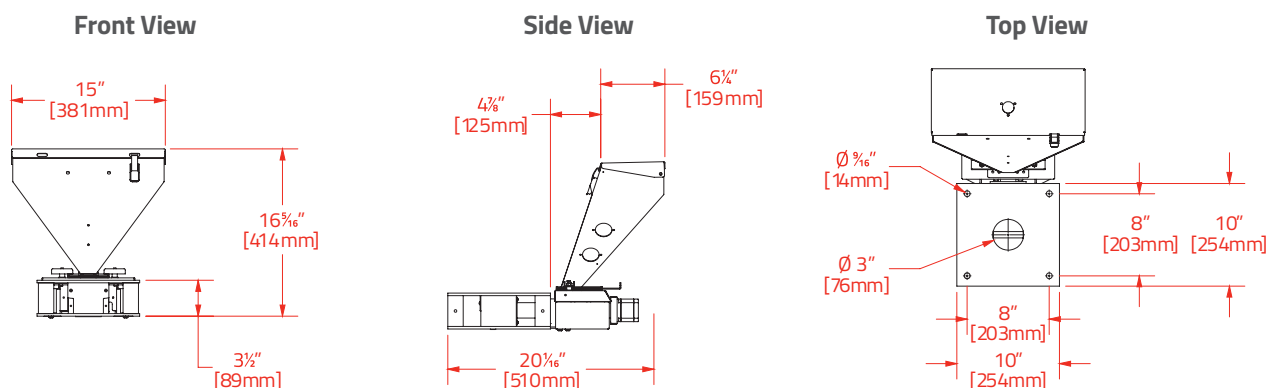
Molding Applications

	MOLDING lb/hr* kg/hr*					
	MGF-3-ST		MGF-4-ST		MGF-8-ST	
Auger Diameter	3/8"	9.5 mm	1/2"	12.7 mm	1"	25.4 mm
Minimum Rate	-					
Maximum Rate	8	3.6	40	18	120	55
Minimum Dispense	2.6 gram		14 gram		40 gram	

MGF Options

Machine Mounting Frames	<p>SGF: Standard adaptor, with large flat base. Suited to larger extruders and injection / blow molding machines.</p> <p>OPF-MKT: Suited to medium sized extruders and injection / blow molding machines.</p> <p>OPF-P40: Suited to small injection / blow molding machines.</p> <p>*Choices according to type and machine installation. Please state with order which adaptor is required, no additional charge.</p>
MGF Automatic Venturi Loader System	Cost effective loading solutions, ensures dosing accuracy of ± 0.2% of set point. Loader is automatically activated by the MGF controller.
MGF-ST Remote Controller Kits	For remote mounting of controller box, up to 20 ft (6 m) length.
MGF Screw Conversion Kits	Choice of conversion kits for molding and extrusion applications.
High Heat Option	For use with materials like PET, where primary materials temperature is above 280 °F / 138 °C.
MPM Pre Mixer Option	For automatic and continuous mixes of masterbatch.
Remote Alarm	Allows alarms to be reported, controlled and managed from remote locations.

MGF ST Dimensions



Maguire reserves the right to cancel product or change product, product specifications and data without notice to improve reliability, function, design or otherwise.

[@MaguireProducts](#) | [in Maguire-Products](#) | [MaguireProducts](#) | info@maguire.com | www.maguire.com

USA Toll Free: +1 888 459 2412 | CANADA: +1 905 879 1100 | EUROPE: +44 1827 338 280 | ASIA: +65 68487117 | IMEA: +971 4 881 6700 | TAIWAN: +886 4 2658 1535