



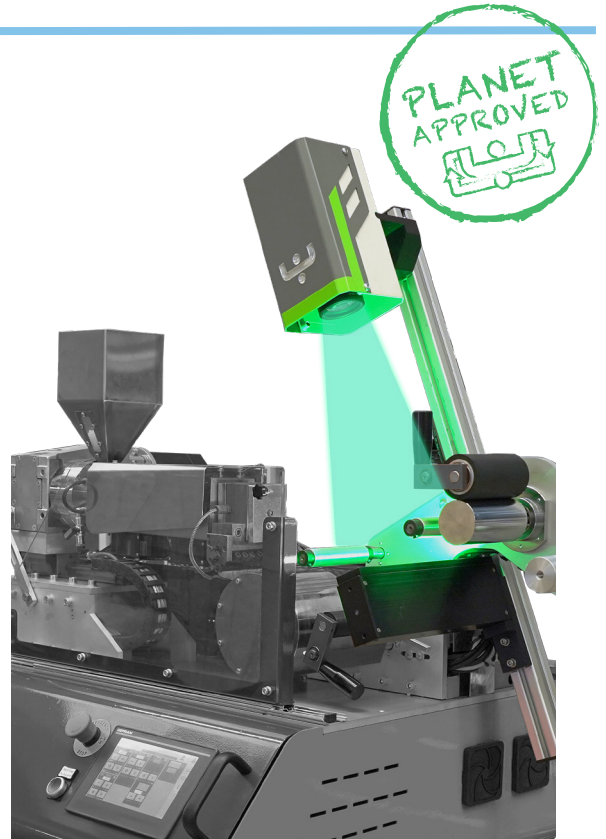
EYESLAB

R&D made simple

The **EASLAB** system is available for laboratory machines. With precision scanning across the entire material width (up to 200mm), our system features linescan cameras boasting 4096-pixel resolution.

Detecting defects as small as 50 µm, EyesLab ensures meticulous inspection at a remarkable scan resolution of 25 µm.

Operating at a maximum speed of 10 meters per minute, it seamlessly integrates into workflows for enhanced productivity and accuracy. It is studied and completely integrated in Eurexma micro-mini cast /blown machines, but it can be easily installed in any other laboratory machine.



OPERATING PRINCIPLE

EyesLab analyses materials produced through cast and blown film laboratory extrusion machines.

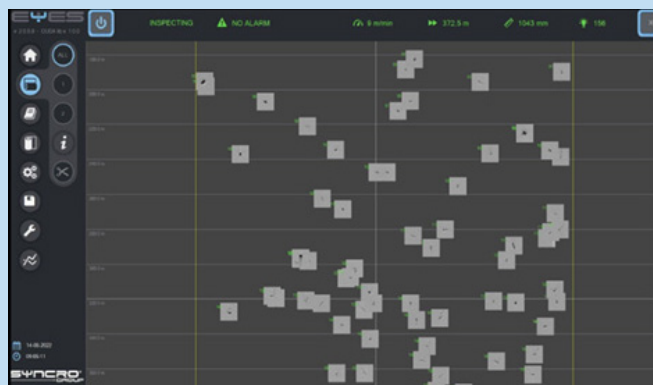
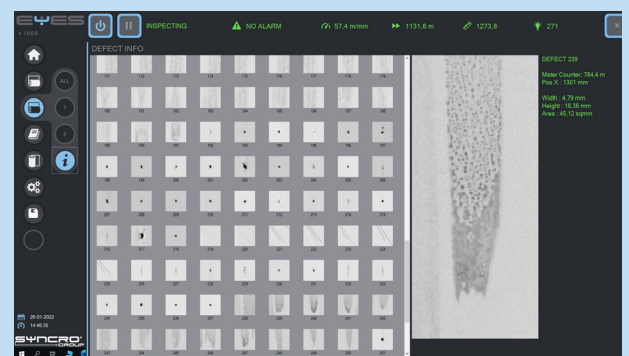
The camera and backlight illuminator are mounted directly on the machine, just before the winder and is directly connected to the industrial PC that performs the image processing and data collection.

PRINCIPLES OF OPERATION

HMI & REPORT

EyesLab features an intuitive HMI for real-time visualization of the inspection process, including advanced 2D mapping for defect analysis.

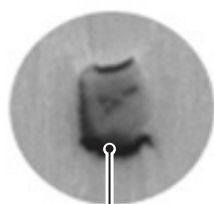
It automatically catalogs defects and provides statistical analysis, enabling detailed inspection reports aligned with industry standards for enhanced productivity and waste reduction.



PROCESSES



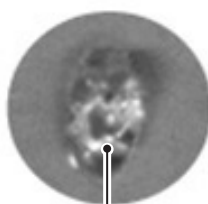
DETECTABLE DEFECTS



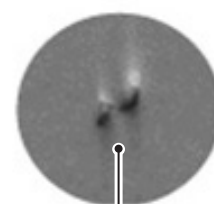
Burn material



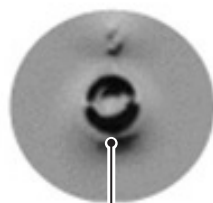
Hole



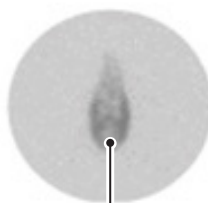
Inclusion



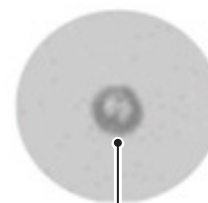
Gel



Fish Eye



Paraffine



Bubble

MINI CAST / MINI BLOWN FILM	200 mm
Quantity of 4k Cameras needed	1
Quantity of Backlight Illuminators	1
Max Line speed	10 m/min
Max Resolution Reached	50 µm

MICROEX CAST / MICROEX BLOWN FILM	100 mm
Quantity of 4k Cameras needed	1
Quantity of Backlight Illuminators	1
Max Line speed	10 m/min
Max Resolution Reached	25 µm